

## Progenesis SameSpots v4.5 – new features in the latest release

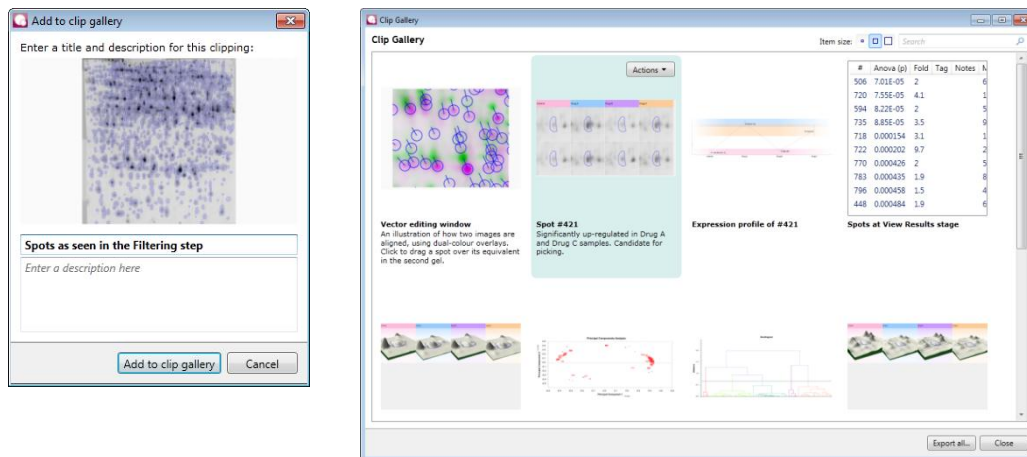
The new release of Progenesis SameSpots v4.5 is now available. Here is a summary of the new features:

### Clip Gallery

The new clip gallery makes it easier for researchers to capture images and tables out of the software for the production of posters, publications, reports and presentations.

Right clicking on an image or table that you wish to capture adds it to the clip gallery and gives you the option to add a title and some notes for future reference. Images are saved as high resolution .png files (300 dpi) which are ideal for print.

If you are writing your publication or poster on a different computer to the one which has SameSpots installed, you can export all of the clips you have saved to a memory stick.



### Protein Identification Data

The workflow has been extended so you can now link database search results back to the protein spot from which they originated. This brings together 2D analysis results with MS-based protein identification so you can put 2D results into biological context. Protein identifications can be imported and viewed in the SameSpots results tables or exported as a .csv file.

Protein Accession	Protein Description	Protein pI	Protein MW	Protein URL
P00957	Alanyl-tRNA synthetase	5.5	96,123	<a href="http://world-2dpage.expasy.org/swiss-2dpage/ac=P0...">http://world-2dpage.expasy.org/swiss-2dpage/ac=P0...</a>
P00959	Methionyl-tRNA synth...	5.56	76,123	<a href="http://world-2dpage.expasy.org/swiss-2dpage/ac=P0...">http://world-2dpage.expasy.org/swiss-2dpage/ac=P0...</a>
P0A9M8	Phosphate acetyltran...	5.29	85,417	<a href="http://world-2dpage.expasy.org/swiss-2dpage/ac=P0...">http://world-2dpage.expasy.org/swiss-2dpage/ac=P0...</a>

You can also cross check your protein search results using molecular weight markers to help you confirm the accuracy of your IDs.

We currently support the import of protein IDs from Mascot or as a .csv file. If you are using a different protein database, please email [support@nonlinear.com](mailto:support@nonlinear.com) as we'd like to hear from you.

#### Nonlinear Dynamics Group

info@nonlinear.com | www.nonlinear.com

#### Nonlinear Dynamics Ltd

Keel House | Garth Heads | Newcastle upon Tyne | NE1 2JE | UK  
tel: +44 (0)191 230 2121 | fax: +44 (0)191 230 2131

#### Nonlinear USA Inc

2530 Meridian Parkway | 3rd Floor | Durham | NC 27713 | USA  
tel: +1 919 806 4401 | toll free: +1 866 435 7872 | fax: +1 919 806 4301

## Automatic Reference Gel selection

We want to make the SameSpots workflow as objective as possible, as this helps with the reproducibility of results. In earlier versions, a reference had to be manually selected. In this new release, SameSpots automatically chooses which gel would make the best reference. It does this by doing a quick check to ascertain which gel image gives the best alignment results.

There is still the option to select your own reference gel if you wish to do so.

## Additional New Features

- We have redesigned the software home page to include links to the SameSpots support materials and show the latest news and updates from Nonlinear. The new search facility means you can quickly locate experiments in your list. If you can't recall where you saved your experiment, there is a link to open the folder location.
- We have improved the image view in manual picking to provide clearer spot annotations, or you can switch the annotations off if you prefer.

